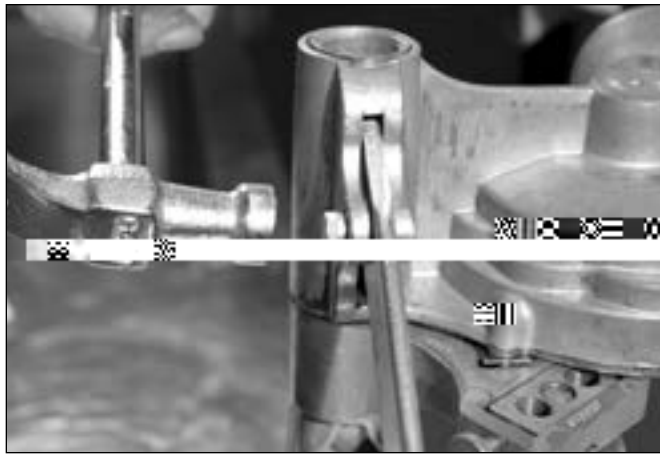
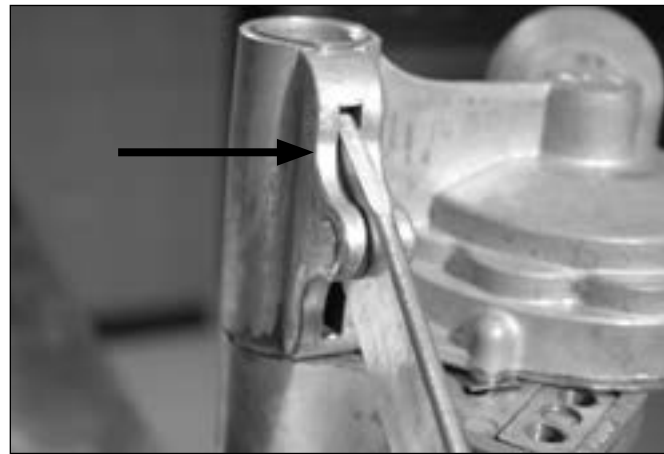


4. Insert the Lever Pivot



Insert the lever pivot from the back — knurled (ridged) side of the pivot out. Tap in the lever pivot with a hammer.

5. Seat the Lever Pivot



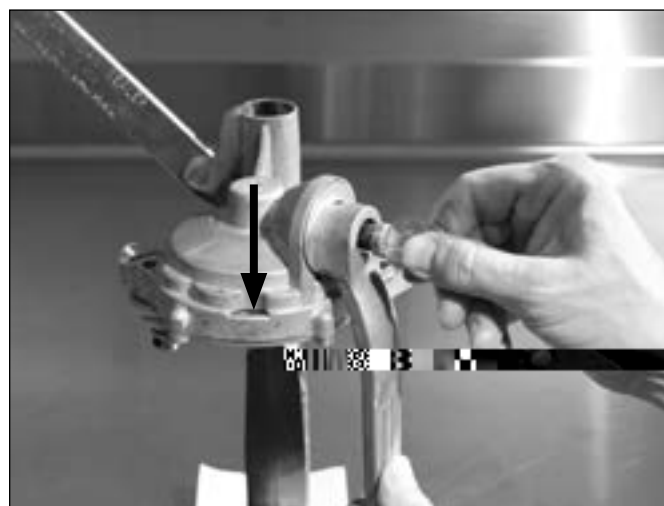
The lever pivot should be flush with the backside of the head (arrow).

6. Attach the Crank



Insert the gear end of the crank into the head. Thread the screw.

7. Set the Crank Position



Finger tighten the screw. Turn the crank handle until the "0" appears in the center of the indicating window (arrow).

Loosen the crank screw and reposition the crank handle so it hangs straight down. Tighten the crank screw with a coin (a quarter works well).

Choosing Cans



To assemble the sealer, you will need to identify the can size you will be using (diameter and height). The size of the can will determine the following:

- chuck size
- position of the seaming rollers
- number and size of spacers used with the turntable spring and turntable
- turntable extension

Selecting Cans



Tall (1 pound)

Tall, 1-pound, 301 x 408 cans use

- #301 chuck
- #2 hole in the 3-hole nut
- two ³/₁₆-inch turntable spacers and turntable spring

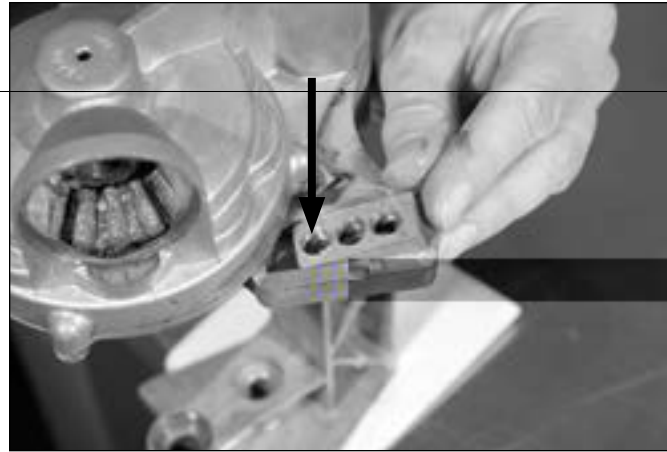
Flat (1/2 pound)

Flat, 1/2-pound, 307 x 200.25 cans use

- #307 chuck
- #2 hole in the 3-hole nut
- two ³/₁₆-inch spacers, one ⁵/₁₆-inch spacer
- turntable extension and turntable spring

In accordance with Federal law and U.S. Department of Agriculture (USDA) civil rights regulations and policies, this institution is prohibited from discriminating on the basis of race, color, national origin, sex, age, disability, and reprisal or retaliation for prior civil rights activity. (Not all prohibited bases apply to all programs.) Program information may be made available in languages other than English. Persons with disabilities who require alternative means of communication for program information (e.g., Braille, large print, audiotape, and American Sign Language) should contact the responsible State or local Agency that administers the program or USDA's TARGET Center at (202) 720-2600 (voice and TTY) or contact USDA through the Federal Relay Service at (800) 877-8339. To file a program discrimination complaint, a complainant should complete a Form AD-3027, USDA Program Discrimination Complaint Form, which can be obtained online at <https://www.ocio.usda.gov/document/ad-3027>, from any USDA office, by calling (866) 632-9992, or by writing a letter addressed to USDA. The letter must contain the complainant's name, address, telephone number, and a written description of the alleged discriminatory action in sufficient detail to inform the Assistant Secretary for Civil Rights (ASCR) about the nature and date of an alleged civil rights violation. The completed

The Three Hole Nut



Right side

Insert the 3-hole nut in the channel labeled "first" on the right side of the head.

Numbers should be visible on the top of the nut. The "1" on the nut should be toward the center of the head (arrow).

Left side

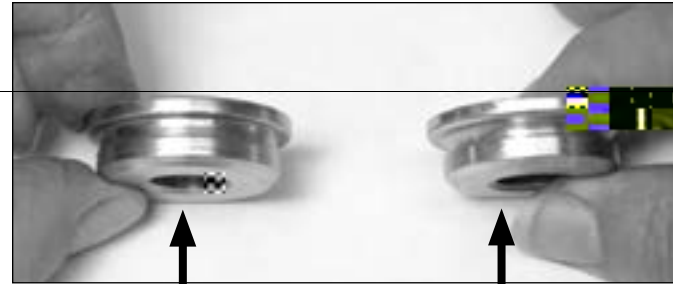
Insert the 3-hole nut in the channel labeled "second" on the left side of the head.

Numbers should be visible on the top of the nut. The "1" on the nut should be toward the center of the head.

Slide the 3-hole nut back and forth in its track until it moves freely. A new sealer may have casting marks that obstruct free movement of the nut within the tracks. File these off, if any.

. Tef

Identifying the Rollers



Second Seaming Roller

First Seaming Roller

There are two seaming rollers. The "first" seaming roller is on the right side of the sealer and is for curling the lid and can body edges together. This roller has a deeper, more rounded profile.

The "second" seaming roller is on the left side of the sealer and is for fattening the seam. This roller has a shallower, fatter profile.

1. The First Roller Assembly



Make the first roller assembly by putting the seaming roller and the

roller



JEMC P Kang (en-US) CID 454 BDC 0 -1.2 TD (by putting the) JEMC 3918 0056005C0055004B 64 BDC 0 -1.2 TD (spring on to) JEMC 3918 0056005C0055004B 74

6. Tighten the Chuck



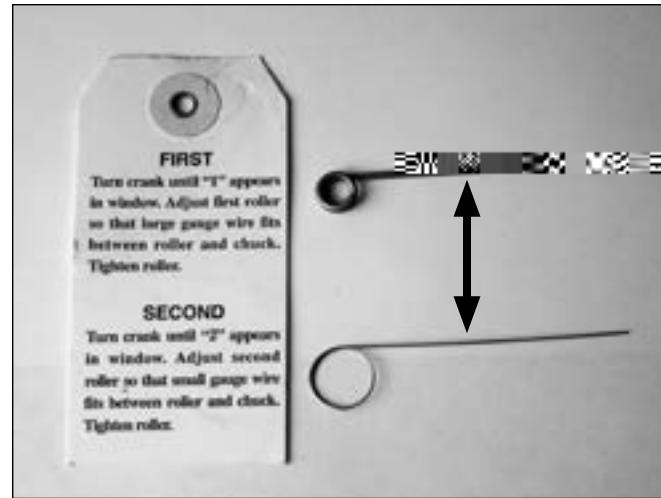
Insert the 3-inch pin into one of the small holes in the chuck. Turn the crank clockwise until the 3-inch pin is pressed against the frame and chuck is tight. Remove the pin.

To remove the chuck, follow the same directions except turn the crank counterclockwise.

Clockwise → Tighten

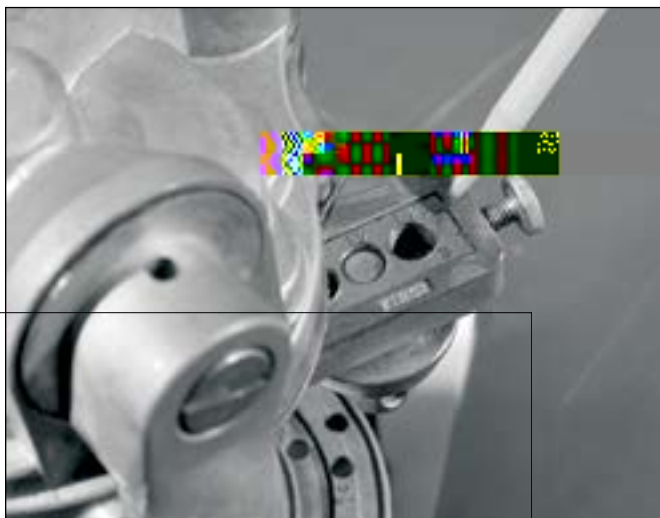
Counterclockwise → Loosen

7. Set the Seam Roller



Accurately setting and securing both seam rollers is essential. The first and second gauge wires are used to set the distance between the rollers and the chucks. These settings control the shape and tightness of your can seams and, therefore, the quality of the hermetic seal. Since food must never be stored in cans that have improperly formed seams, an improperly adjusted can sealer has no role in food preservation.

8. Adjust the First Seaming Roller



Back out the thumbscrew and slide the first seaming roller and 3-hole nut to the outside, hard against the frame (pencil point in photograph). The first roller is to the right.

9. Measure the Pin



20. F he Sea

