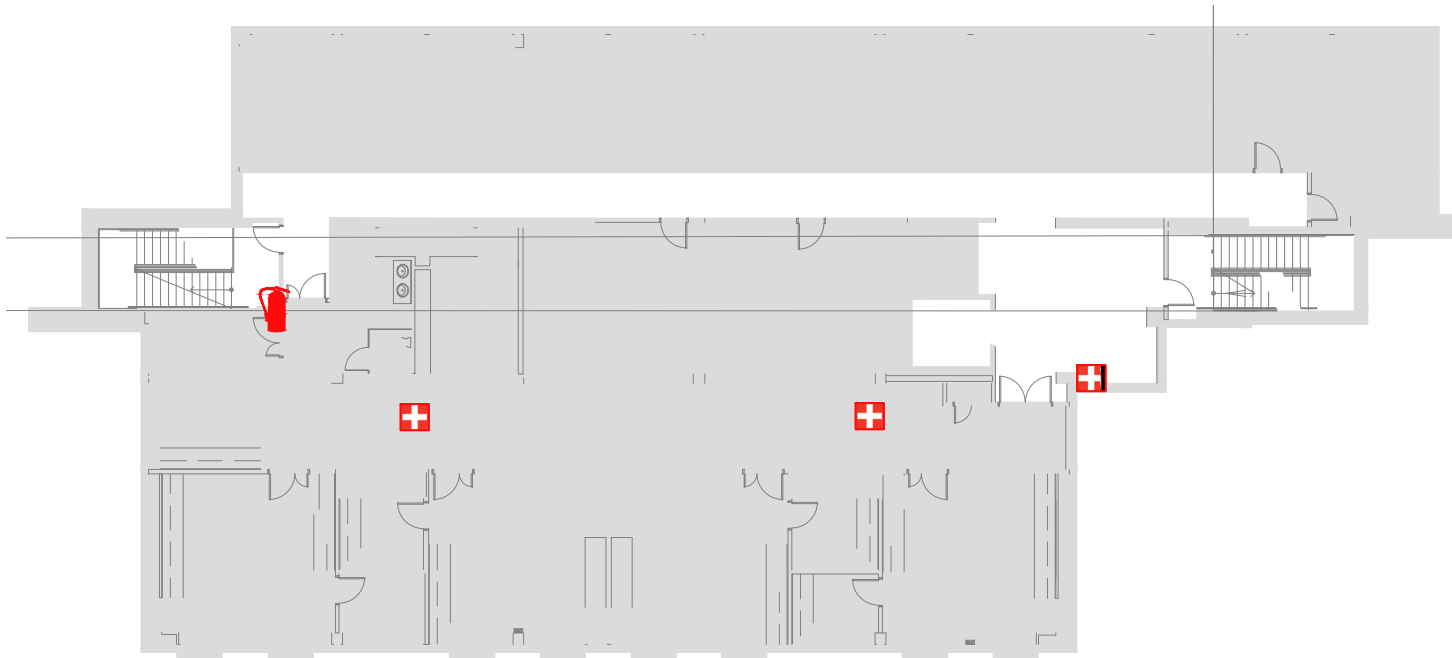


# FLOOR 3

## CALL 911



FIRE ALARM WILL SOUND AS CHIRPING ELECTRICAL HORN, STROBE LIGHT WILL FLASH.

### PERSONS WITH DISABILITIES

CALL 911, REPORT YOUR LOCATION, PROCEED TO THE NEAREST EXIT OR EXIT STAIRWELL AND AWAIT ASSISTANCE.



### EVACUATION SITE

#### SYMBOL LEGEND

EMERGENCY EGRESS PATH



FIRE EXTINGUISHER



ALARM PULL STATION



YOU ARE HERE